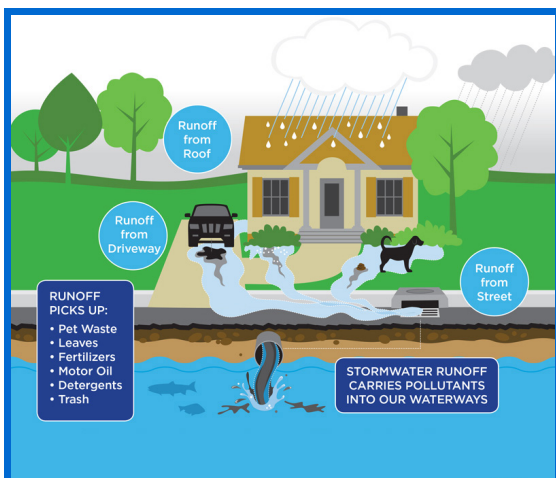


STORM WATER

Windham's storm drains discharge directly into the Town's bodies of water untreated. This is why it is crucial to prevent contaminants from entering the storm drains.

Pollution can be harmful to humans, aquatic life, and the overall ecosystem of the downstream waterbodies.



Stormwater Pollution Prevention Plan Guide:



CONTACT US

Meaghan O'Dwyer
Environmental Planner
modwyer@windhamnh.gov

Community Development Division
3 N Lowell Road
Windham, NH 03087

(603) 432-3806

THANKS FOR READING!

This brochure was developed to fulfill MS4 outreach requirements for construction/developer audiences.



Town of Windham
STORMWATER
FOR DEVELOPERS



SEDIMENT AND EROSION CONTROL MANAGEMENT

To help remove sediments before they enter the Town's drainage system:

- Slow the flow to allow settling time
- Minimize steep slope disturbances
- Expand the flow path
- Use sediment removal equipment
- Direct stormwater flow to vegetated areas
- Install perimeter sediment controls
- Reduce sediment track-out

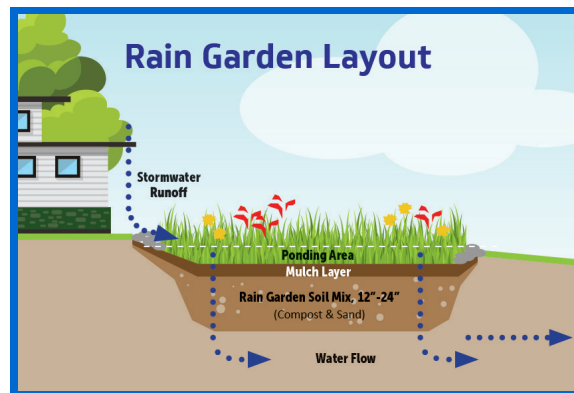
**CHOOSE PREVENTION
OVER REMEDIATION**

LID SYSTEMS

LID (Low-Impact Development) Systems work to control the stormwater at the source. Landscaping and minimizing impervious surfaces are common LID methods.

Other examples of LID Systems include:

- bioretention facilities
- rain gardens
- rain barrels
- permeable pavements



EPA CONSTRUCTION GENERAL PERMIT

Construction projects that require coverage under the Construction General Permit (CGP) are projects/activities that disturb one or more acres of land. This also includes construction activities that are part of a larger common plan that would cumulatively disturb one or more acres of contiguous or noncontiguous land.

If the aforementioned applies, a Notice of Intent (NOI) must be submitted to the EPA.

To comply with the permit, one must have a Stormwater Pollution Prevention Plan. This plan must lay out how stormwater will be managed on-site. Erosion and sediment controls must be utilized, as well as other pollution prevention controls to ensure the minimization of spills and pollutants entering stormwater.

See below for more information related to the 2022 CGP requirements:



SCAN ME